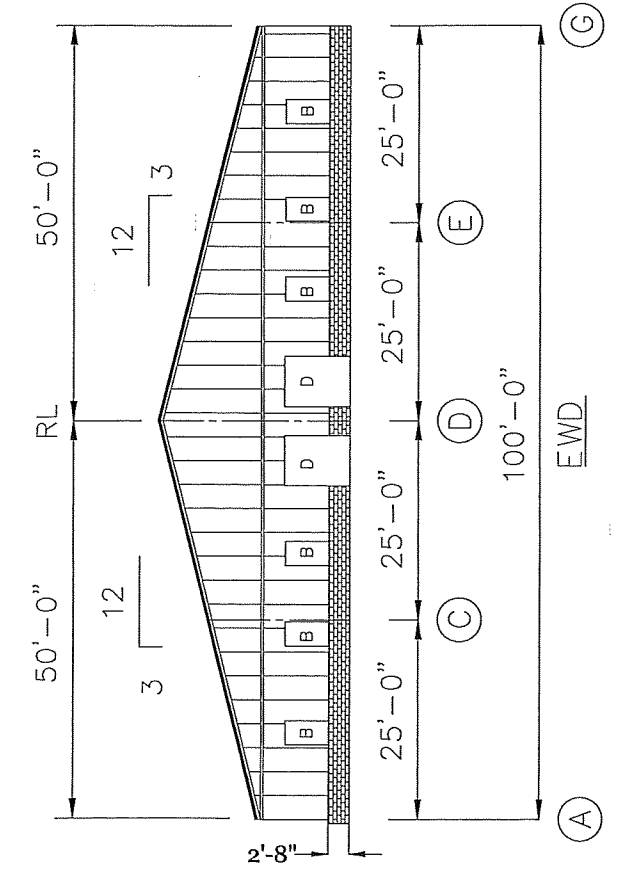
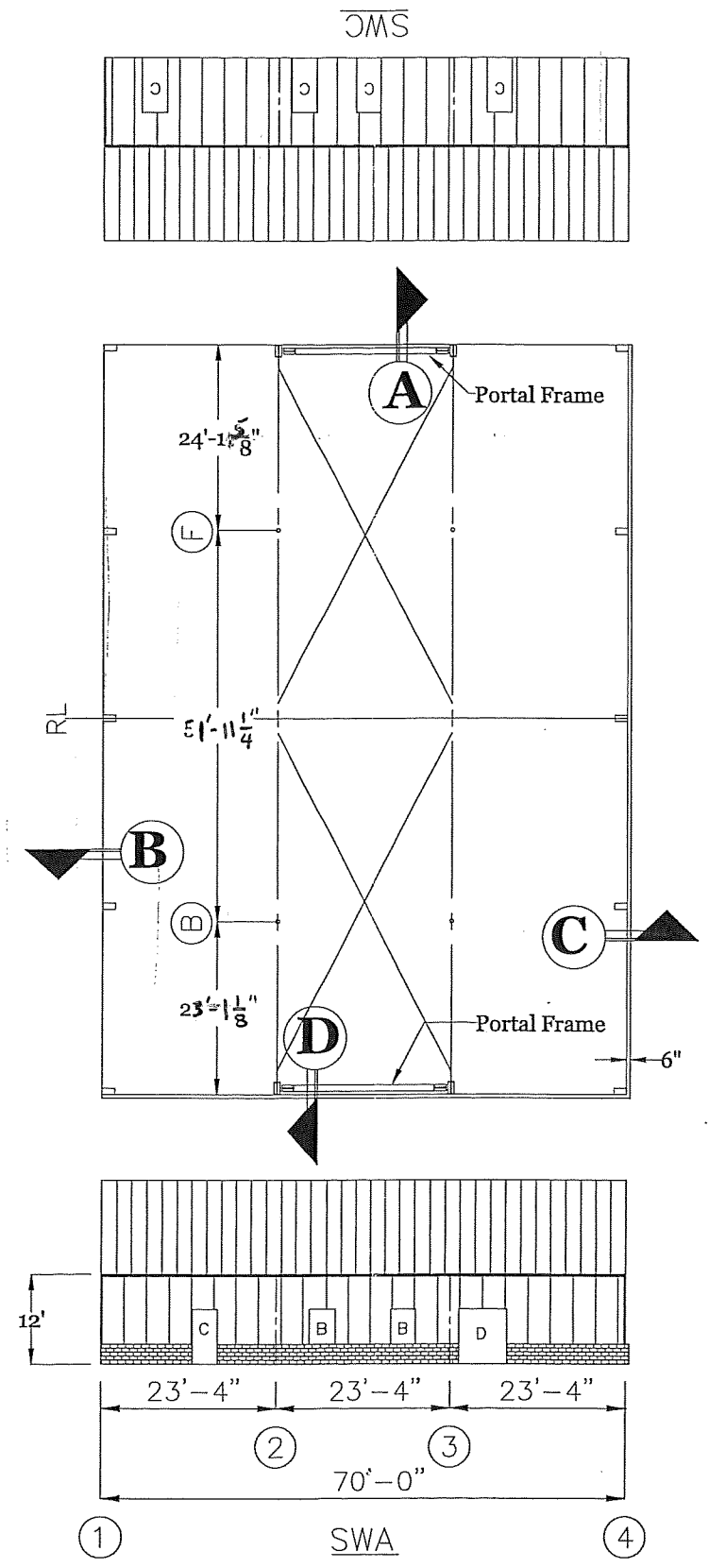
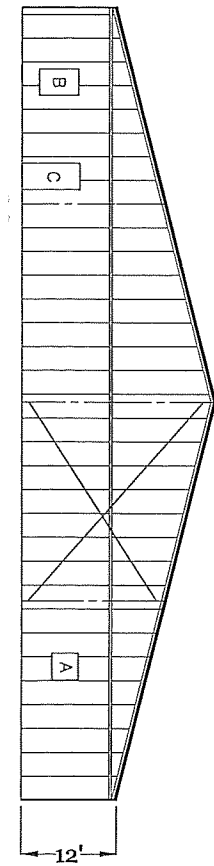


DESIGN: NCBL 2009
 LIVE 20 reduced
 WIND 96 Exp 'B'
 SNOW 15 ground
 Frame deflection to L/W/S = H/200
 Frame deflection to seismic = H/140

ROOF 24 ga UltraDek Colonial Red
 WALLS: 26 ga PBR Saddle Tan
 GABLES 26 ga PBR - Light Stone
 TRIMS Saddle Tan

Interior Columns - "H" shape
 SQR FT 7000

EWB



| ACCESSORY SCHEDULE | | |
|--------------------|-----|---|
| ID | QTY | DESCRIPTION |
| A | 1 | 3'-0 1/2" x 3'-2 1/2" Framed Opening W/ Sill @ 3'-9" A.F.F. |
| B | 9 | 3'-0 1/2" x 5'-6 1/2" Framed Opening Sill @ 2'-8" A.F.F. |
| C | 6 | 3070 Pre-Assembled door |
| D | 3 | 6'-4" x 7'-2" Framed Opening |

| COVERING | | | |
|----------------|------|--------------|-----------------|
| SURFACE | GAGE | COLOR | TYPE |
| ROOF | 24 | Colonial Red | ULTRA DEK Panel |
| SWA | 26 | Saddle Tan | PBR Panel |
| SWC | 26 | Saddle Tan | PBR Panel |
| EWB Below Eave | 26 | Saddle Tan | PBR Panel |
| EWD Below Eave | 26 | Saddle Tan | PBR Panel |
| EWB Gable End | 26 | Light Stone | PBR Panel |
| EWD Gable End | 26 | Light Stone | PBR Panel |

DRAWING STATUS: **"ORDER DOCUMENTS"**

These drawings, being For Order Clarification, by definition are for conceptual representation only. Their purpose is to confirm proper interpretation of the project documents. Please review these drawings, sign and return ASAP. Mesco can not release this order for production until these drawings are approved.

Approved _____ Sign: _____ Date: _____

These drawings and the metal building they represent are the product of Mesco Building Solutions or another division or affiliate of NCI Group, Inc. - 400 N Kimball Ave., Southlake, TX 76092. The engineer whose seal appears hereon is employed by Mesco Building Solutions or another division or affiliate of NCI Group, Inc. and is not the engineer of record for this project.

| DRAWING ISSUE HISTORY | | | | |
|-----------------------|----------|--|----------|-------|
| NO. | DATE | DESCRIPTION | SSM / PA | ENGR. |
| 0 | 03/28/09 | BUILDING DRAWINGS | JHK | XXX |
| 1 | 08/22/09 | BUILDING DRAWINGS REVISED PER CHANGE ORDER # 1 | JHK | |

MESCO Mesco Building Solutions
 P.O. Box 93629, Southlake, Texas 76092
 Voice 817-488-8511 Fax 817-329-2326

BUYER: _____ JOB/QUOTE NUMBER _____
 OW: _____ SHEET NUMBER _____
 PROJECT NAME & LOCATION: _____ PA1 of PA3

MBMA
 METAL BUILDING MANUFACTURERS ASSOCIATION

WORKING COPY